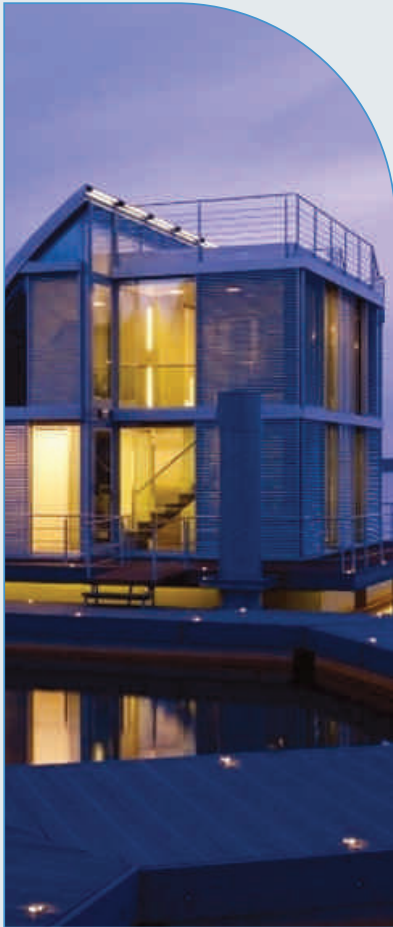




C.R.I. PUMPS
Pumping trust. Worldwide.

Power...



Anytime...



Anywhere...



**ENGINE PUMPS & PORTABLE GENERATORS
(PETROL & DIESEL)**



An ISO 9001 & ISO 14001 Company

PORTABLE PETROL GENERATORS



Specifications

MODEL	CP-06-5	CP-08-6	CP-09-5	CP-10-6	CP-20-5	CP-23-6	CP-23-5	CP-25-6	CP-25-5	CP-28-6
Frequency Hz	50	60	50	60	50	60	50	60	50	60
Rated AC output kW	0.65	0.8	0.9	1.0	2.0	2.3	2.3	2.5	2.5	2.8
Max. AC output kW	0.72	0.88	1.0	1.1	2.3	2.5	2.5	2.8	2.8	3.1
Speed rpm	3000	3600	3000	3600	3000	3600	3000	3600	3000	3600
Displacement cc	63		87		163		196		208	
DC Output V-A	12V - 8.3A		12V - 8.3A		12V - 8.3A		12V - 8.3A		12V - 8.3A	
AC output voltage V	110 - 240		110 - 240		110 - 240		110 - 240		110 - 240	
Engine Type	Single Cylinder, 2 Stroke				Single Cylinder, Fan Cooling, 4 Stroke					
Fuel tank capacity L	4.2		5.2		15		15		15	
Oil tank capacity L	0.4		0.4		0.6		0.6		0.6	
Fuel Consumption (g/hp.hr)	450		330		294		294		294	
Noise level @ 7m (dB/A)	65		93		95		96		96	
Dimensions (l x b x h) mm	370 x 315 x 310		465 x 375 x 380		590 x 433 x 483		590 x 433 x 483		590 x 433 x 483	
Net Weight kg	16		25.8		43.5		44.5		49	

Only recoil starting type

Both recoil and electric starting type

Suffix letter "E" for Electric start models

Specifications

MODEL	CP-30-5	CP-33-6	CP-40-5	CP-45-6	CP-50-5	CP-55-6	CP-60-5	CP-65-6	CP-85-5E	CP-95-6E
Frequency Hz	50	60	50	60	50	60	50	60	50	60
Rated AC output kW	3.0	3.3	4.0	4.5	5.0	5.5	6.0	6.5	8.5	9.5
Max. AC output kW	3.3	3.8	4.5	5.0	5.5	6.0	6.5	7.0	9.5	10.5
Speed rpm	3000	3600	3000	3600	3000	3600	3000	3600	3000	3600
Displacement cc	270		389		389		420		614	
DC Output V-A	12V - 8.3A		12V - 8.3A		12V - 8.3A		12V - 8.3A		12V - 8.3A	
AC output voltage V	110 - 240		110 - 240		110 - 240		110 - 240		110 - 240	
Engine Type	Single Cylinder, Fan Cooling, 4 Stroke								Double Cylinder, 4 Stroke	
Fuel tank capacity L	25		25		25		25		25	
Oil tank capacity L	1.1		1.1		1.1		1.1		1.4	
Fuel Consumption (g/hp.hr)	278		278		278		276		276	
Noise level @ 7m (dB/A)	96		96		96		96		96	
Dimensions (l x b x h) mm	685 x 512 x 550		685 x 512 x 550		685 x 512 x 550		685 x 512 x 550		930 x 555x 580	
Net Weight kg	68		78		79.5		87		139	

Optional : The above models are also available with electric start system (Suffix letter "E" for Electric start models)

Specifications

MODEL	CP-45-5C	CP-50-6C	CP-55-5C	CP-60-6C	CP-85-5C	CP-95-6C
Frequency Hz	50	60	50	60	50	60
Rated AC output kW	4.5	5.0	5.5	6.0	8.5	9.5
Max. AC output kW	5.0	5.5	6.0	6.6	9.5	10.5
Speed rpm	3000	3600	3000	3600	3000	3600
Displacement cc	389		420		614	
DC Output V-A	12V - 8.3A		12V - 8.3A		12V - 8.3A	
AC output voltage V	110 - 240		110 - 240		110 - 240	
Engine Type	Single Cylinder, Air Colled, 4 Stroke				Double Cylinder, 4 Stroke	
Fuel tank capacity L	15		15		25	
Oil tank capacity L	1.1		1.1		1.4	
Fuel Consumption (g/hp.hr)	278		276		276	
Noise level @ 7m (dB/A)	96		96		96	
Starting system	Electric		Electric		Electric	
Dimensions (l x b x h) mm	1000 x 550 x 660		1000 x 550 x 660		990 x 635 x 860	
Net Weight kg	168		168		200	



In view of continuous development, the information / descriptions / specifications / illustrations are subject to change without notice.

PORTABLE DIESEL GENERATORS



Specifications

OPEN TYPE

MODEL	CD-17-5	CD-20-6	CD-30-5	CD-33-6	CD-42-5	CD-46-6	CD-46-5	CD-50-6
Frequency Hz	50	60	50	60	50	60	50	60
Rated AC output kW	1.7	2.0	3.0	3.3	4.2	4.6	4.6	5.0
Max. AC output kW	1.9	2.2	3.3	3.6	4.6	5.0	5.0	5.5
Speed rpm	3000	3600	3000	3600	3000	3600	3000	3600
Displacement cc	211		296		406		418	
DC Output V-A	12V - 8.3A		12V - 8.3A		12V - 8.3A		12V - 8.3A	
AC output voltage V	110 - 240		110 - 240		110 - 240		110 - 240	
Engine Type	Single Cylinder, Air Cooled 4 Stroke Deisel Engine							
Fuel tank capacity L	12.5		12.5		12.5		12.5	
Oil tank capacity L	0.75		1.11		1.65		1.65	
Fuel Consumption (g/hp.hr)	205		205		205		205	
Noise level @ 7m (dB/A)	85		85		86		86	
Dimensions (l x w x h) mm	625 x 450 x 515		680 x 455 x 545		740 x 475 x 590		740 x 475 x 590	
Net Weight kg	57		70		87		88	

Optional : All above models are available with electric start system (Suffix letter "E" for Electric start models)

Specifications

CANOPY TYPE

MODEL	CD-30-5C	CD-33-6C	CD-42-5C	CD-45-6C	CD-46-5C	CD-50-6C
Frequency Hz	50	60	50	60	50	60
Rated AC output kW	3.0	3.3	4.2	4.5	4.6	5.0
Max. AC output kW	3.3	3.6	4.6	5.0	5.0	5.5
Speed rpm	3000	3600	3000	3600	3000	3600
Displacement cc	296		406		418	
DC Output V-A	12V - 8.3A		12V - 8.3A		12V - 8.3A	
AC output voltage V	110 - 240		110 - 240		110 - 240	
Engine Type	Single Cylinder, Air Cooled, 4 Stroke Diesel Engine					
Fuel tank capacity L	16		16		16	
Oil tank capacity L	1.11		1.65		1.65	
Fuel Consumption (g/hp.hr)	205		205		205	
Noise level @ 7m (dB/A)	95		96		96	
Starting system	Electric		Electric		Electric	
Dimensions (l x w x h) mm	835 x 540 x 740		910 x 540 x 740		910 x 540 x 740	
Net Weight kg	130		145		145	



Specifications

DOUBLE CYLINDER

MODEL	CD-100-5E	CD-110-6E
Frequency Hz	50	60
Rated AC output kW	10.0	11.0
Max. AC output kW	11.0	12.0
Speed rpm	3000	3600
Displacement cc	954	
DC Output V-A	12V - 8.3A	
AC output voltage V	110 - 240	
Engine Type	Double Cylinder, 4 Stroke	
Fuel tank capacity L	25	
Oil tank capacity L	7	
Fuel Consumption (g/hp.hr)	200	
Noise level @ 7m (dB/A)	95	
Starting system	Electric	
Dimensions (l x w x h) mm	900 x 568 x 695	
Net Weight kg	170	



The above model is also available with Canopy (Replace letter "C" in place of "E" for Canopy model).

In view of continuous development, the information / descriptions / specifications / illustrations are subject to change without notice.