

Peripheral Pumps

PE SERIES



DESCRIPTION

C.R.I. Peripheral pump's volute chamber and impellers are designed to give the best possible hydraulic efficiency and suction lift characteristics. The S.S inserts provided inside the pump casing reduces wear & tear and this give longer life and prevent the pump from seizing if it is kept idle for long period. Motor stator is made of low watt loss steel laminations. The windings are of high grade enameled copper wire and are varnish impregnated. Dynamically balanced rotor ensure vibration and noise free operations. Construction of motor frames and usage of quality materials result in high performance and low temperature rise thereby increasing the life cycle of the motor.

SPECIFICATIONS

Power Range	: 0.37 kW & 0.75 kW.
Speed	: 2900 rpm.
Version	: Single phase, 230V, 50Hz, A.C. Supply (Permanent split capacitor-PSC) Incorporated with Thermal Overload Protector.
Type of Duty	: S1 (Continuous).
Direction of Rotation	: Clockwise viewed from driving end.
Degree of Protection	: IP 54.
Class of Insulation	: 'B'
Suction and Delivery Size	: 1" x 1" (BSP)

FEATURES

- Sturdy and compact.
- Quiet and maintenance free.
- Excellent hydraulic performance.
- Good suction lift characteristics.
- S.S insert is provided in the pump casing.
- Incorporated with thermal overload protector.
- Dynamically balanced rotating parts

MATERIALS OF CONSTRUCTION

Pump Casing	: Cast iron with S.S insert
Motor Frame	: Aluminium Alloy
Impeller	: Forged Brass
Pump Bracket	: Cast Iron
Shaft	: S.S. 410
Water Filling Plug	: Brass
Mechanical Seal	: Carbon & Ceramic
'O'Ring Seals	: NBR

PUMP OPERATING LIMITS

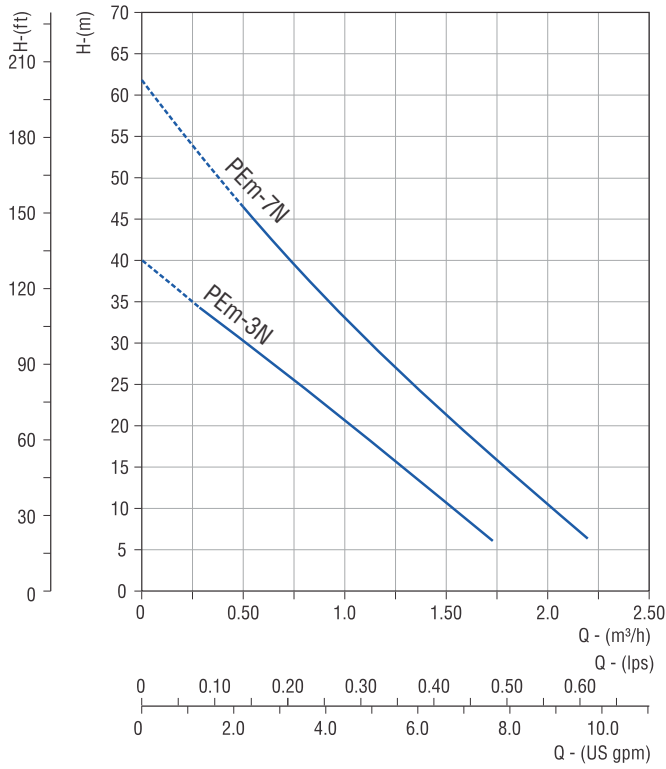
Maximum Suction Lift upto	: 8 m / 26 ft
Flow Rate upto	: 0.87 lps / 3.13 m ³ /h
Maximum Head upto	: 61m/ 200 ft
Maximum Operating Pressure	: 7.4 bar.
Maximum Liquid Temperature	: 50°C.
Maximum Ambient Temperature	: 40°C.

APPLICATIONS

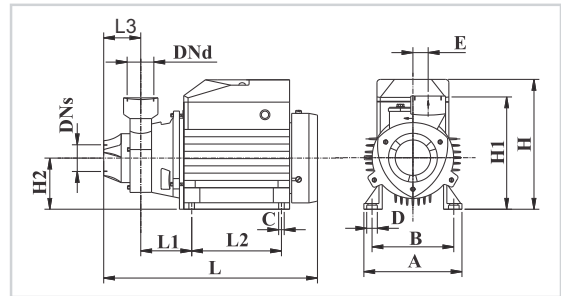
Residential, Gardens, Washing Systems, Pressure Boosting Unit and Civil Applications.

PERFORMANCE CURVES

PE SERIES



DIMENSIONAL DRAWING



PERFORMANCE CHART

PUMP MODEL	MOTOR POWER		RATED CURRENT (A) 1Ph 230V	NOMINAL PUMP SIZE IN INCHES (Suc x Del)	SUCTION LIFT IN m	DISCHARGE IN lps / m³/h									
	kW	HP				lps	0	0.1	0.2	0.3	0.4	0.5	0.6		
PEEm-3N	0.37	0.5	2.5	1 x 1	8	Total head in metres	0	0.4	0.7	1.1	1.4	1.8	2.2		
PEEm-7N	0.75	1.0	5.2	1 x 1	8		40	33	27	18	12	5			
							61	51	41	31	23	14	6		

DIMENSIONAL DATA

PUMP MODEL	MOTOR kW	DNs	DNd	L1	L2	L	A	B	C	D	E	H	H1	H2	L3	APPROX NETT WEIGHT kg
PEEm-3	0.37	1"	1"	68.5	80	259	121	100	7.7	10.5	22	158	138	62	47	7.0
PEEm-7	0.75	1"	1"	85	99.5	310	136	112	8.0	8.0	26	198	161	71	58	13.0

* All Dimensions are in mm.