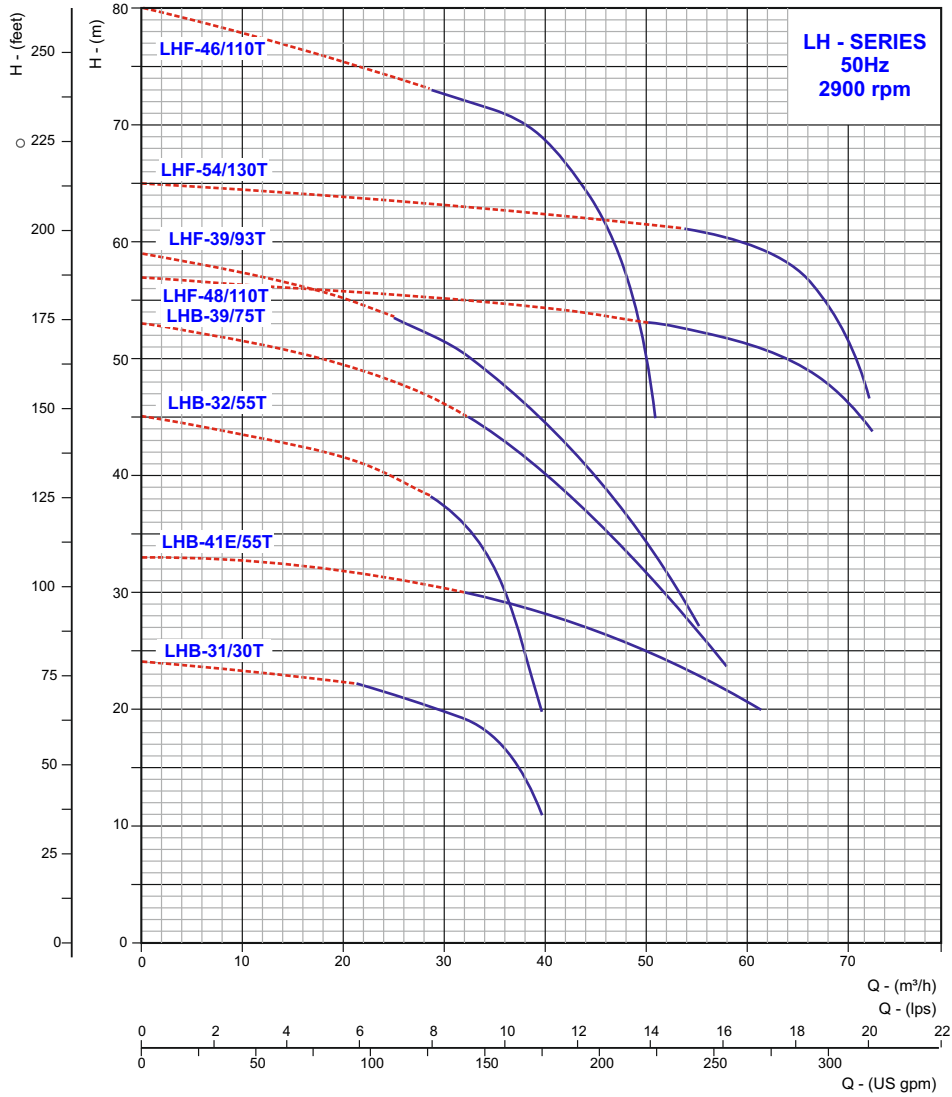


HORIZONTAL OPENWELL SUBMERSIBLE PUMPS

Performance Table & Curves

LH - Series

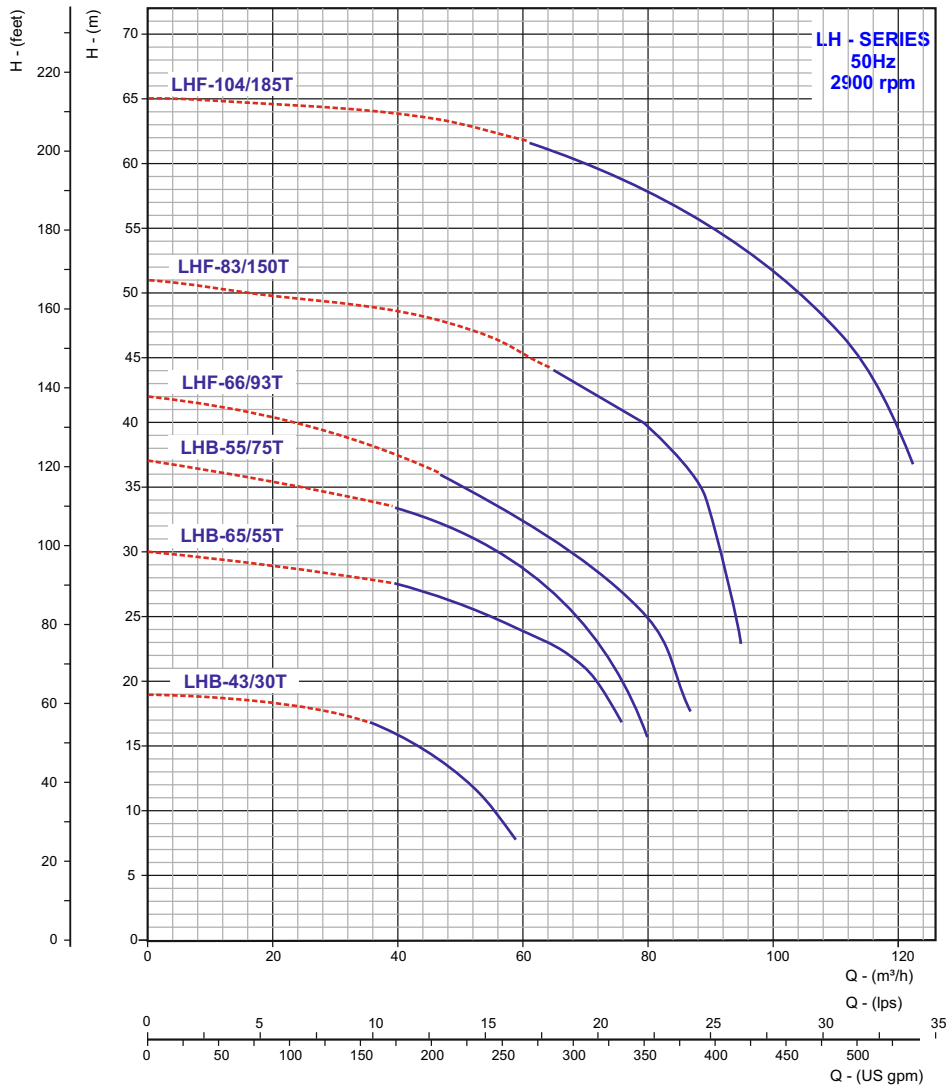


PUMP MODEL	MOTOR POWER		OUTLET SIZE IN mm	HEAD IN METERS																		
	HP	kW		m ³ /h	0	10.8	14.4	18	21.6	25.2	28.8	32.4	36	39.6	43.2	46.8	50.4	54	57.6	61.2	68.4	72
			lps	0	3	4	5	6	7	8	9	10	11	12	13	14	15	16	17	19	20	
LHB-31/30T	4.0	3.0	50	24				22	21	20	19	16.5	11									
LHB-41E/55T	7.5	5.5	50	33								29	28.2	27	26	25	23.5	22	20			
LHB-32/55T	7.5	5.5	50	45						38	35.5	30	20									
LHB-39/75T	10.0	7.5	50	53							45	42.8	40	37	35	31	27	24				
LHF-48/110T	15.0	11.0	50	57					55.3	55.1	55	54.8	54.5	54	53.5	53	52.5	52	51	48	44	
LHF-39/93T	12.5	9.3	50	59					53	52	49	47	45	42	37	33	27					
LHF-54/130T	17.5	13.0	50	65													61	60	59	54	47	
LHF-46/110T	15.0	11.0	50	80						73	72	71	69	64	60	45	44					

HORIZONTAL OPENWELL SUBMERSIBLE PUMPS

Performance Table & Curves

LH - Series

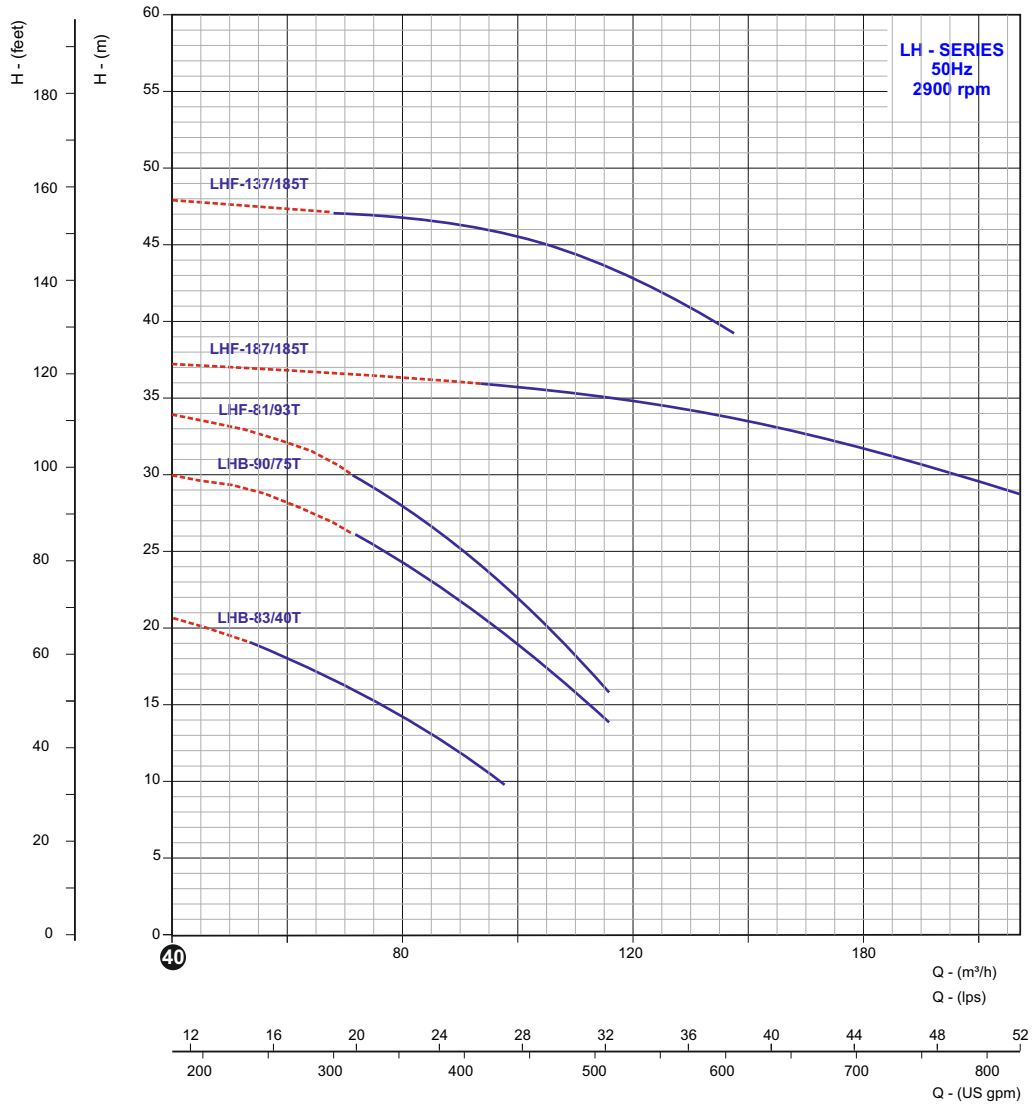


PUMP MODEL	MOTOR POWER		OUTLET SIZE IN mm	m³/h	HEAD IN METERS																							
	HP	kW			0	36	40	43	47	50	54	58	61	65	68	72	76	79	83	86	90	94	101	108	122			
LHB-43/30T	4.0	3.0	65	0	10	11	12	13	14	15	16	17	18	19	20	21	22	23	24	25	26	28	30	34				
LHB-65/55T	7.5	5.5	65	19	16.5	16	15	14	13	12	8																	
LHB-55/75T	10.0	7.5	65	30	27.5	27	26.5	25.5	25	24.5	24	22.5	21.5	20.5	17													
LHF-66/93T	12.5	9.3	65	37	33.5	33	32.5	32	30.5	29.5	28	27	25.5	23.5	20	16												
LHF-83/150T	20.0	15.0	65	51								44	43	42	41	40	38	37	34	23								
LHF-104/185T	25.0	18.5	65	65							62	61	60	59.5	58	57	56.5	56	55	54	52	49	37					

HORIZONTAL OPENWELL SUBMERSIBLE PUMPS

Performance Table & Curves

LH - Series

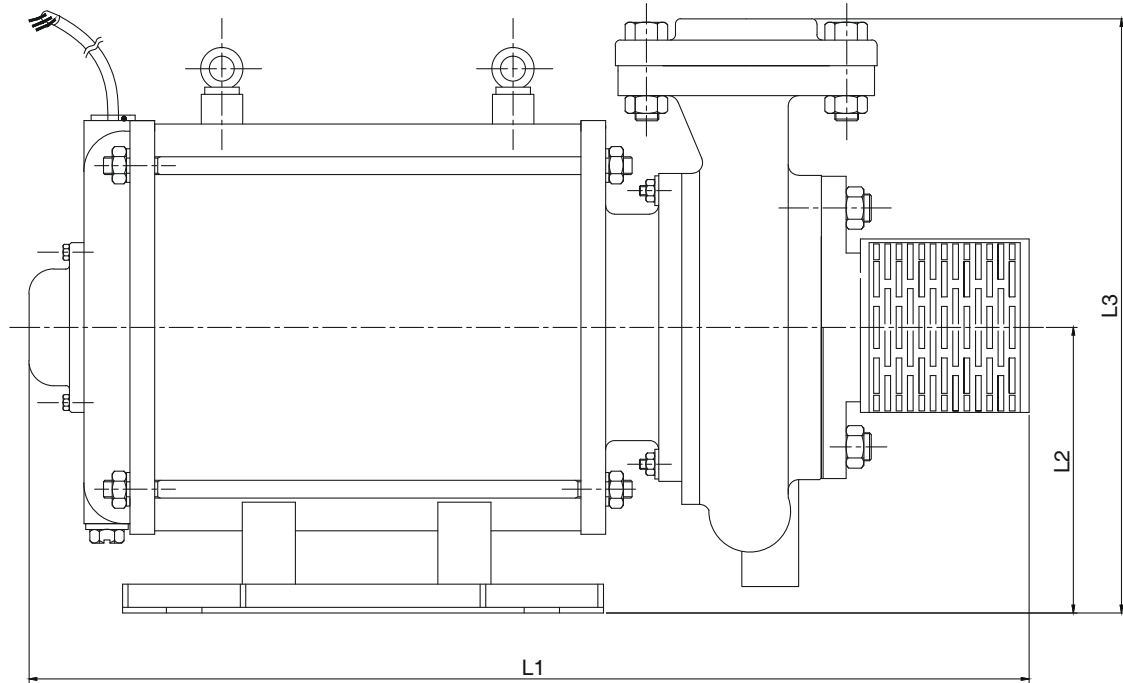


PUMP MODEL	MOTOR POWER		OUTLET SIZE IN mm	m ³ /h	HEAD IN METERS																			
	HP	KW			0	58	61	65	68	72	76	79	83	86	90	94	97	101	104	108	115	130	151	194
			lps	0	16	17	18	19	20	21	22	23	24	25	26	27	28	29	30	32	36	42	54	
LHB-83/40T	5.5	4.0	80	22	18.5	18	17	16.5	16	15	14	13.5	13	12	11	10								
LHB-90/75T	10.0	7.5	80	31					26	25	24	23	22.5	22	21	20	19	18	17	14				
LHF-81/93T	12.5	9.3	80	36					30	29	28	27	26	25	24	23	22	21	20	16				
LHF-187/185T	25.0	18.5	100	38												36	35.8	35.6	35.4	35.2	35	34.4	32.4	28.4
LHF-137/185T	25.0	18.5	80	49				47.1	47	47	46.7	46.6	46.5	46	45.8	45.7	45.5	45	44.5	43	41			

VERTICAL OPENWELL SUBMERSIBLE PUMPS

Dimension Table

LB & LH - Series



PUMP MODEL	Power kW	OUTLET SIZE	L1	L2	L3
LBB-25/15M	1.5	50	400	262	103
LBB 7/07M	0.75	25	343	228	90
LBB-30/22M	2.2	50	453	283	109
LBB-13E/11M	1.1	25	356	269	106
LBB-16/22M	2.2	40	445	297	123
LBB-11/11M	1.1	25	383	269	110
LHB-31/30T	3	50	630	155	338
LHB-41E/55T	5.5	50	665	155	338
LHB-32/55T	5.5	50	670	150	360
LHB-39/75T	7.5	50	700	180	343
LHF-48/110T	11	50	777	178	453
LHF-39/93T	9.3	50	735	177	417
LHF-54/130T	13	50	812	178	430
LHF-46/110T	11	65	781	178	400
LHB-43/30T	3	65	634	142	367
LHB-65/55T	5.5	65	682	155	367
LHB-55/75T	7.5	65	695	193	390
LHF-66/93T	9.3	65	727	192	433
LHF-83/150T	15	65	825	178	453
LHF-104/185T	18.5	65	899	178	456
LHB-83/40T	4	80	660	155	379
LHB-90/75T	7.5	80	710	178	379
LHF-81/93T	9.3	80	732	178	449
LHF-187/185T	18.5	100	951	167	450
LHF-137/185T	18.5	80	927	167	450

All Dimensions are in mm