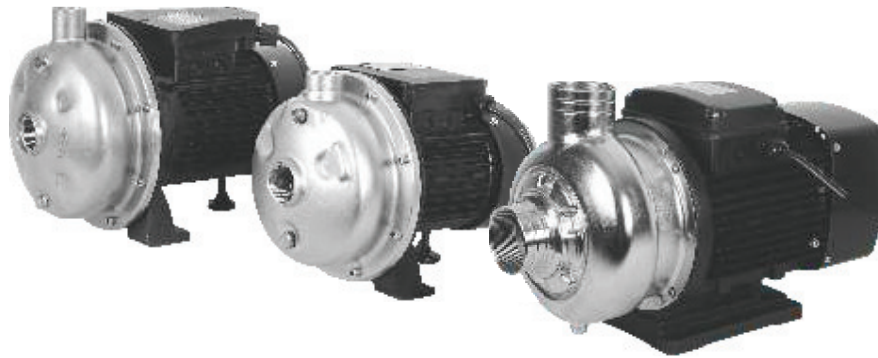


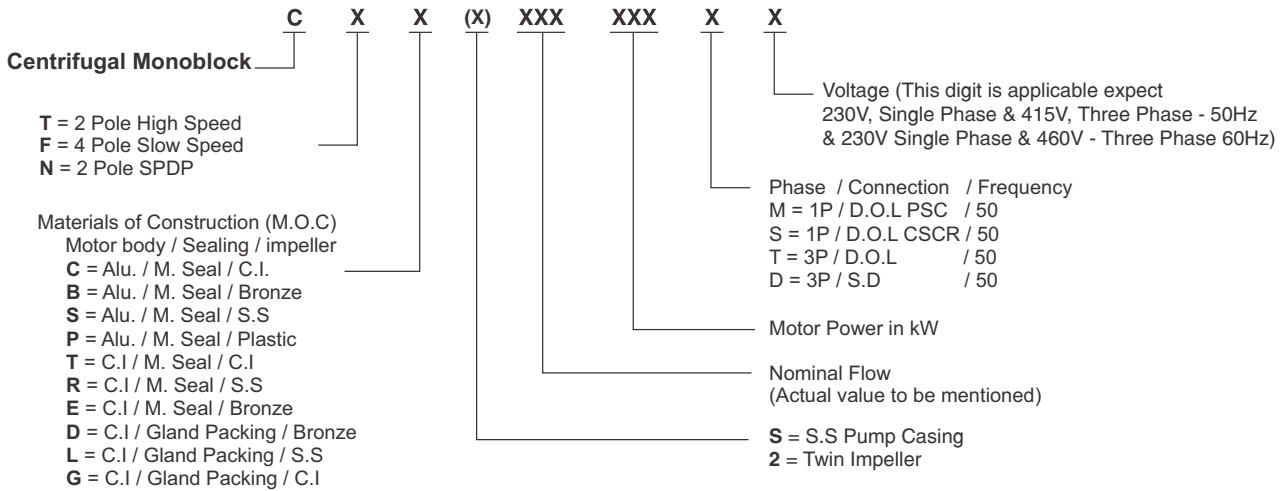
STAINLESS STEEL

# Centrifugal Pumps

CTSS SERIES



## MODEL IDENTIFICATION CODE



## DESCRIPTION

C.R.I. Centrifugal pump's volute chamber and impellers are carefully designed to give the best possible hydraulic and suction lift characteristics. Most modern and highly sophisticated machinery and technology are employed in the manufacture of these pumps using quality raw material, dynamically balanced rotors, impellers & shaft ensure longer life and noise free operation. Shaft is made of quality steel & precisely grounded to ample size for transmitting the rated horse power, without any transmission loss.

## SPECIFICATIONS

Power Range	: 0.37kW - 3.0kW, 2 Pole, Single Phase & Three Phase.
Speed	: 2900 rpm.
Degree of Protection	: IP 55
Class of Insulation	: 'F' / 'B'
Versions	: Single phase - 230V, 50Hz, A.C. Supply (Permanent split capacitor-PSC) Incorporated with Thermal Overload Protector. Three phase - 380-415V, 50Hz A.C. supply
Direction of Rotation	: Clockwise viewed from driving end.
Type of Duty	: S1 (Continuous).
Nominal Suction and Delivery Sizes	: 1" to 3"

## MATERIALS OF CONSTRUCTION

Pump Casing	: S.S 304
Motor Frame	: Aluminium
Impeller	: S.S 304
Shaft	: S.S 304 + Carbon Steel
Sealing	: Mechanical Seal (Carbon & Ceramic)

## PUMP OPERATING LIMITS

Maximum Head	: 35.5 m / 116 ft
Maximum Suction Lift	: 7m
Maximum Liquid Temperature	: +5°C ~ +60°C
Maximum Ambient Temperature	: 50°C

## FEATURES

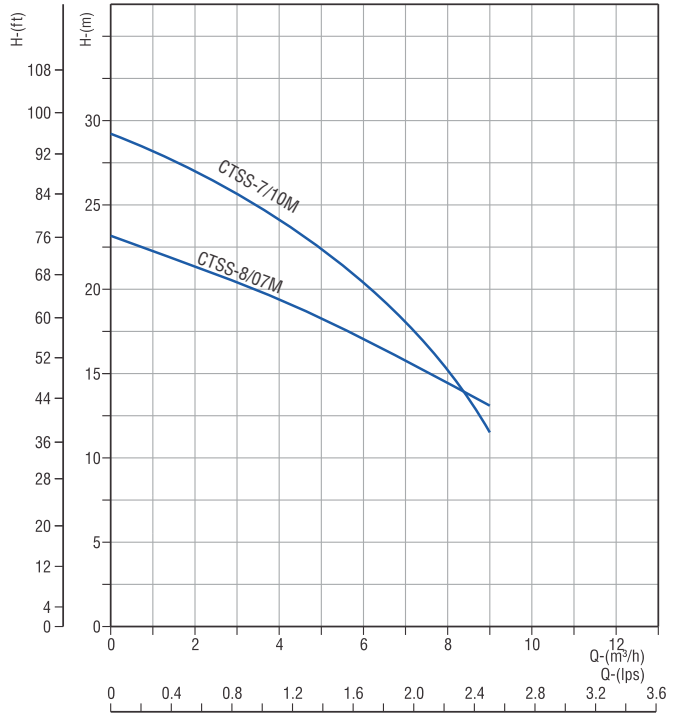
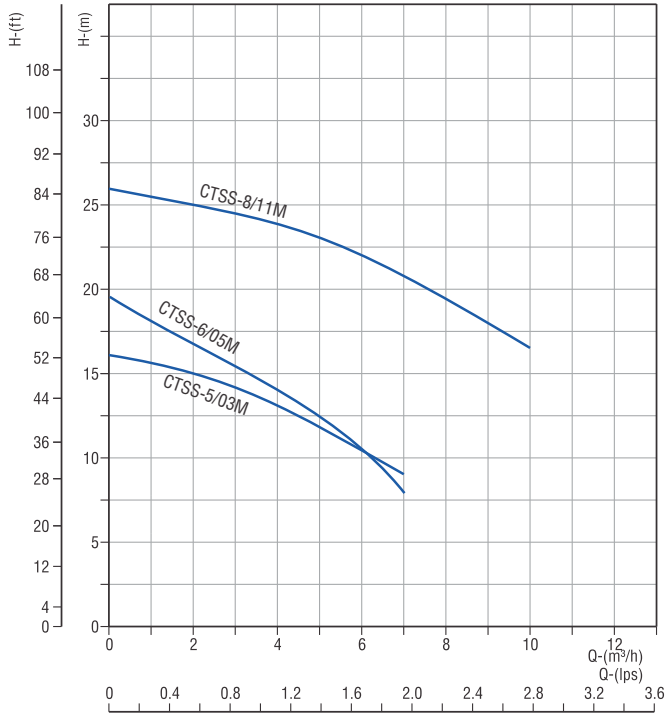
- High Operating efficiency resulting in lower power consumption.
- Good suction lift characteristics.
- Dynamically balanced rotating parts.
- Balanced and rigid construction.
- Inbuilt thermal overload protector in all single phase pumps.
- Complete SS construction more suitable for potable water.

## APPLICATIONS

Residential, Irrigation, Small Farms, Pressure Boosting Units, Industrial Water Supply, Food Processing Industries, Washing Systems.

## PERFORMANCE CURVES

## CTSS SERIES



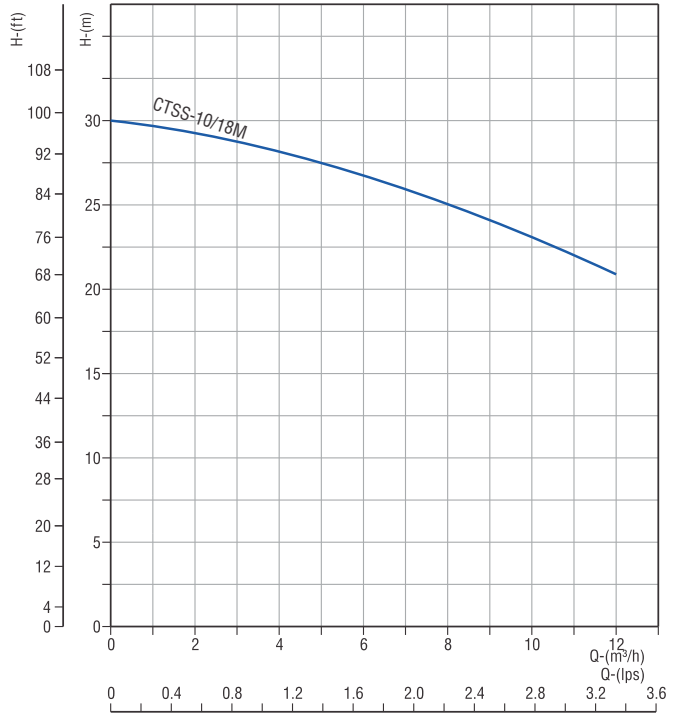
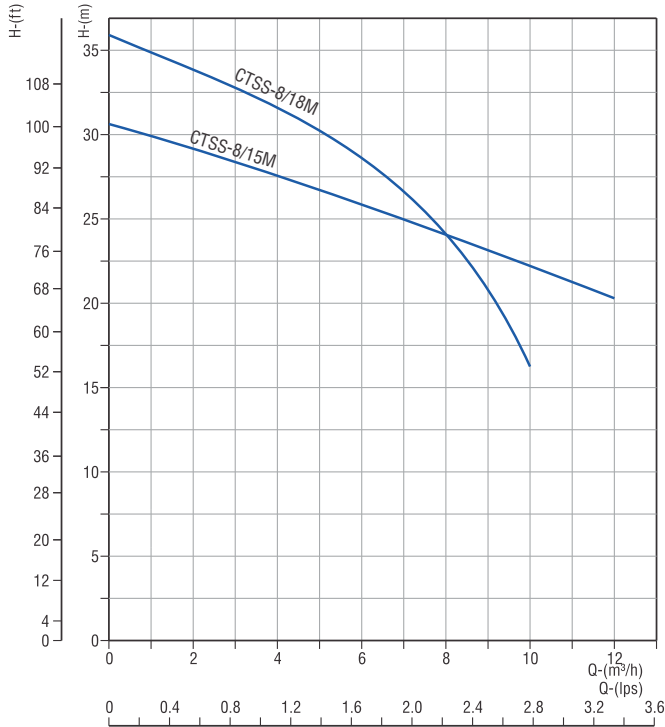
## PERFORMANCE CHARTS

PUMP MODEL		MOTOR POWER		RATED CURRENT (A)		NOMINAL PUMP SIZE IN INCHES (Suc x Del)	DISCHARGE IN lps / m³/h											
							0	0.27	0.55	0.83	1.1	1.3	1.6	1.9	2.2	2.5	2.9	
230V	380V	kW	HP	1Ph 230V	3Ph 380V		0	1	2	3	4	5	6	7	8	9	10	
							TOTAL HEAD IN METRES											
CTSS-5/03M	CTSS-5/03T	0.37	0.5	2.4	-	1¼ x 1	16	15.5	15	14.5	13	11.5	10.5	9				
CTSS-6/05M	CTSS-6/05T	0.55	0.75	3.8	1.4	1¼ x 1	19.5	18	17	15.5	13.5	12.5	11	8				
CTSS-8/07M	CTSS-8/07T	0.75	1.0	5.2	1.8	1¼ x 1	23	22	21.5	20.5	19.5	18	17	16	14.5	13		
CTSS-7/10M	CTSS-7/10T	1.0	1.3	6.2	2.4	1¼ x 1	29	28	26.5	25.5	24	22.5	20.5	18.5	15.5	11.5		
CTSS-8/11M	CTSS-8/11T	1.1	1.5	7	2.6	1¼ x 1	26.5	26	25.5	25	24.5	23.5	22	20.5	19.5	18	17	

In view of continuous developments the information / performance / descriptions / specifications / illustrations are subject to change without notice.

PERFORMANCE CURVES

CTSS SERIES



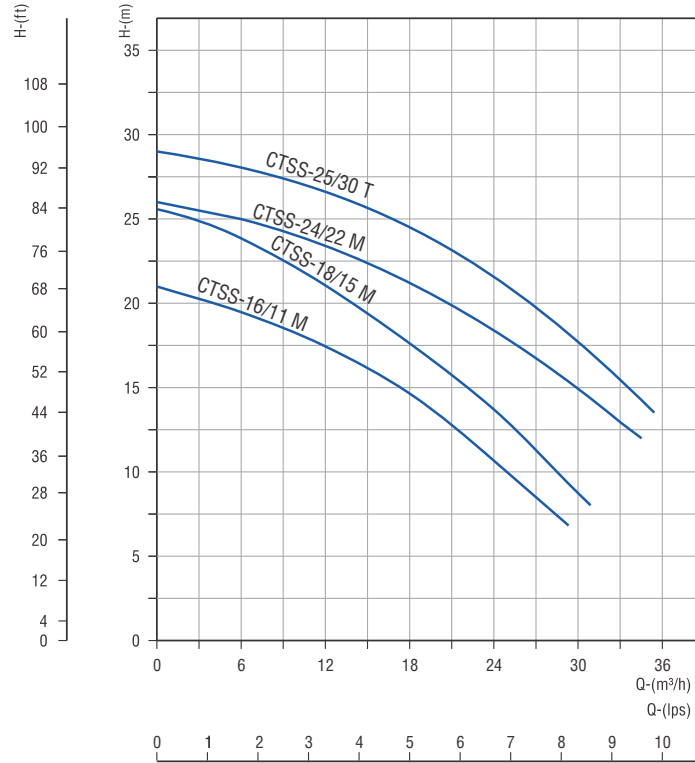
PERFORMANCE CHARTS

PUMP MODEL		MOTOR POWER		RATED CURRENT (A)		NOMINAL PUMP SIZE IN INCHES (Suc x Del)	DISCHARGE IN lps / m³/h												
							0	0.27	0.55	0.83	1.1	1.3	1.6	1.9	2.2	2.5	2.9	3.3	
230V	380V	kW	HP	1Ph 230V	3Ph 380V		0	1	2	3	4	5	6	7	8	9	10	12	
							TOTAL HEAD IN METRES												
CTSS-8/15M	CTSS-8/15T	1.5	2.0	9.2	3.5	1¼ x 1	31	30	29	28.5	27.5	27	26	25	24.5	23	22	20.5	
CTSS-8/18M	CTSS-8/18T	1.8	2.5	13	4.1	1¼ x 1	36.5	35	34	33	32	30	28.5	27	24	20.5	16.5		
CTSS-10/18M	CTSS-10/18T	1.8	2.5	13	4.1	1½ x 1¼	30	29.5	29	28.5	28	27.5	27	26	25	24	23	21	

In view of continuous developments the information / performance / descriptions / specifications / Illustrations are subject to change without notice.

## PERFORMANCE CURVES

## CTSS SERIES



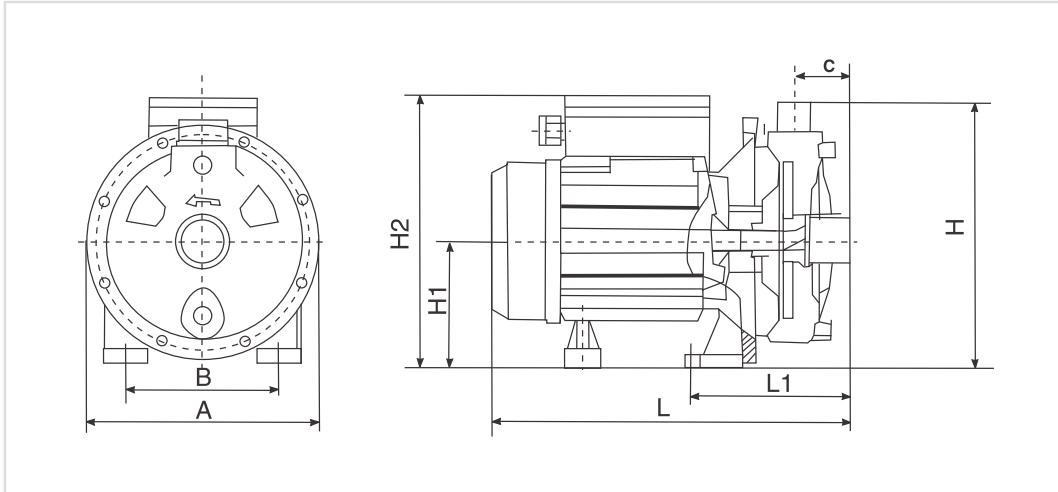
## PERFORMANCE CHARTS

PUMP MODEL		MOTOR POWER		RATED CURRENT (A)		NOMINAL PUMP SIZE IN INCHES (Suc x Del)	DISCHARGE IN lps / m³/h														
							0	0.8	1.7	2.5	3.3	4.2	5.0	5.8	6.7	7.5	8.3	9.2	10		
230V	380V	kW	HP	1Ph 230V	3Ph 380V		0	3	6	9	12	15	18	21	24	27	30	33	36		
							TOTAL HEAD IN METRES														
CTSS-16/11M	CTSS-16/11T	1.1	1.5	7	2.6	2 x 2	21	20	19	18.5	17.5	16.5	14.5	13	11	8.5	7 (29m³/h)				
CTSS-18/15M	CTSS-18/15T	1.5	2.0	9.2	3.5	2 x 2	25.5	25	23.5	22.5	21	19	17.5	16	13.5	11	8.5	8 (31m³/h)			
CTSS-24/22M	CTSS-24/22T	2.2	3.0	14	4.9	2 x 2	26	25.5	25	24.5	23.5	22.5	21.5	20	18.5	17	15	13	12 (34m³/h)		
-	CTSS-25/30T	3.0	4.0	-	6.3	2 x 2	29	28.5	28	27.5	26.5	25.5	24.5	23	22	20	17.5	15.5	13.5 (35m³/h)		

In view of continuous developments the information / performance / descriptions / specifications / Illustrations are subject to change without notice.

**DIMENSIONAL DRAWING**

**CTSS SERIES**



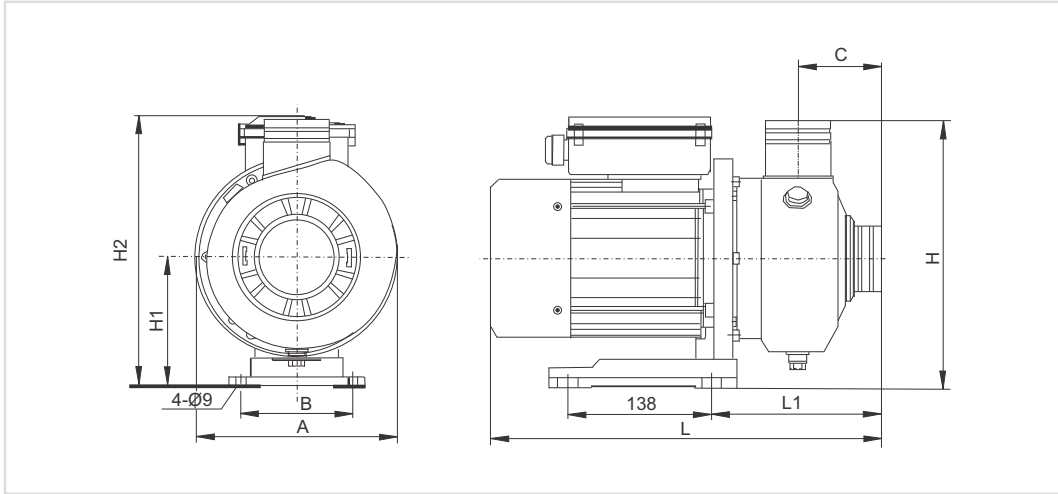
**DIMENSIONAL DATA**

PUMP MODEL		MOTOR POWER		A	B	C	H	H1	H2	L	L1	APPROX. NETT WT IN Kg
230V	380V	kW	HP									
CTSS-5/03M	CTSS-5/03T	0.37	0.5	170	100	50	180	84	186	270	120	6.5
CTSS-6/05M	CTSS-6/05T	0.55	0.75	213	140	47	222	110	242	313	138	12.5
CTSS-8/07M	CTSS-8/07T	0.75	1.0	213	140	47	222	110	242	313	138	13.5
CTSS-7/10M	CTSS-7/10T	1.0	1.3	213	140	47	222	110	242	313	138	15.5
CTSS-8/11M	CTSS-8/11T	1.1	1.5	213	140	47	222	110	242	313	138	15.5
CTSS-8/15M	CTSS-8/15T	1.5	2.0	234	150	49	240	120	251	337	140	18.5
CTSS-8/18M	CTSS-8/18T	1.8	2.5	234	150	49	240	120	251	337	140	22.0
CTSS-10/18M	CTSS-10/18T	1.8	2.5	231	140	47	222	110	255	366	138	21.5

\* All Dimensions are in mm.

**DIMENSIONAL DRAWING**

**CTSS SERIES**



**DIMENSIONAL DATA**

PUMP MODEL		MOTOR POWER		A	B	C	H	H1	H2		L	L1	APPROX. NETT WT IN Kg
230V	380V	kW	HP						1Ph	3Ph			
CTSS-16/11M	CTSS-16/11T	1.1	1.5	193	108	82	258	125	265	235	378	165	16.5
CTSS-18/15M	CTSS-18/15T	1.5	2.0	193	108	82	258	125	265	235	378	165	18
CTSS-24/22M	CTSS-24/22T	2.2	3.0	193	108	82	258	125	242	242	415	165	22
-	CTSS-25/30T	3.0	4.0	193	108	82	258	125	-	242	432	165	23

\* All Dimensions are in mm.